

# FLEX SPACE FOR LEASE

818 - 79th Avenue SE

818 79th Avenue SE, Suite A  
Tumwater, WA 98501



## Building Features

- 20,826 Total SF; includes 6,551 SF of office on two levels, 14,275 SF of warehouse space, two enclosed production rooms, and plumbing and floor drains.
- Shared loading dock on the rear of the building near grade-level doors, and the unit also has two sets of restrooms.
- Former food manufacturing facility with 3-phase power.
- Fully sprinkled for high piled storage
- Heated / Air Conditioned
- 35 Parking Stalls
- Easy access to I-5
- Flex space with:
  - private offices - workspaces - breakroom
- Zoned LI: (Light Industrial) approved for:
  - Warehouse
  - Light Manufacturing
  - Distribution
  - Retail
  - Office
  - Recreation
  - Auto sales and service
  - Motor pool / transit facilities
- Parcel # 12711410300

**Rental Rate**  
**\$0.92/SF Monthly + NNN**

FOR ADDITIONAL INFORMATION PLEASE CONTACT:

The Property Management Team: [propertymanagement@kaufmancd.com](mailto:propertymanagement@kaufmancd.com)

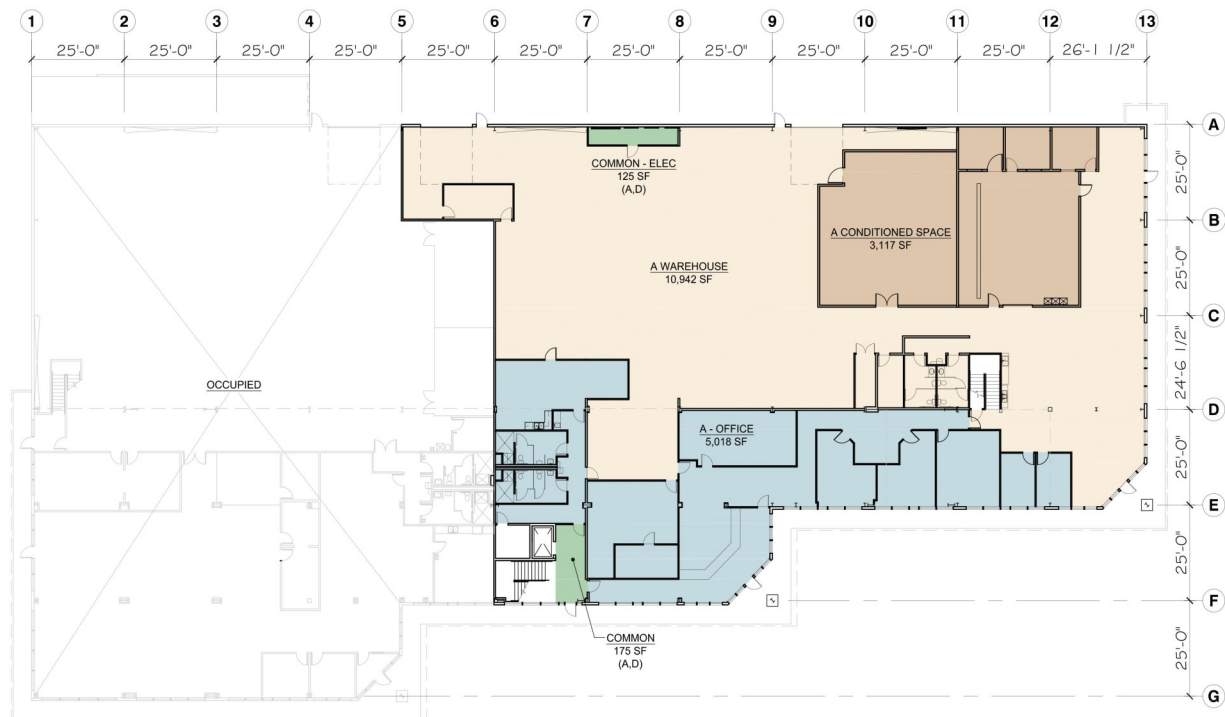
Phone: (360) 491-5230

7908 Sweet Iron Ct SE Tumwater, WA 98501

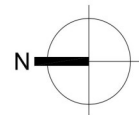
[www.kaufmancd.com](http://www.kaufmancd.com)



# 818 - 79TH AVENUE SE, SUITE A FIRST FLOOR PLAN



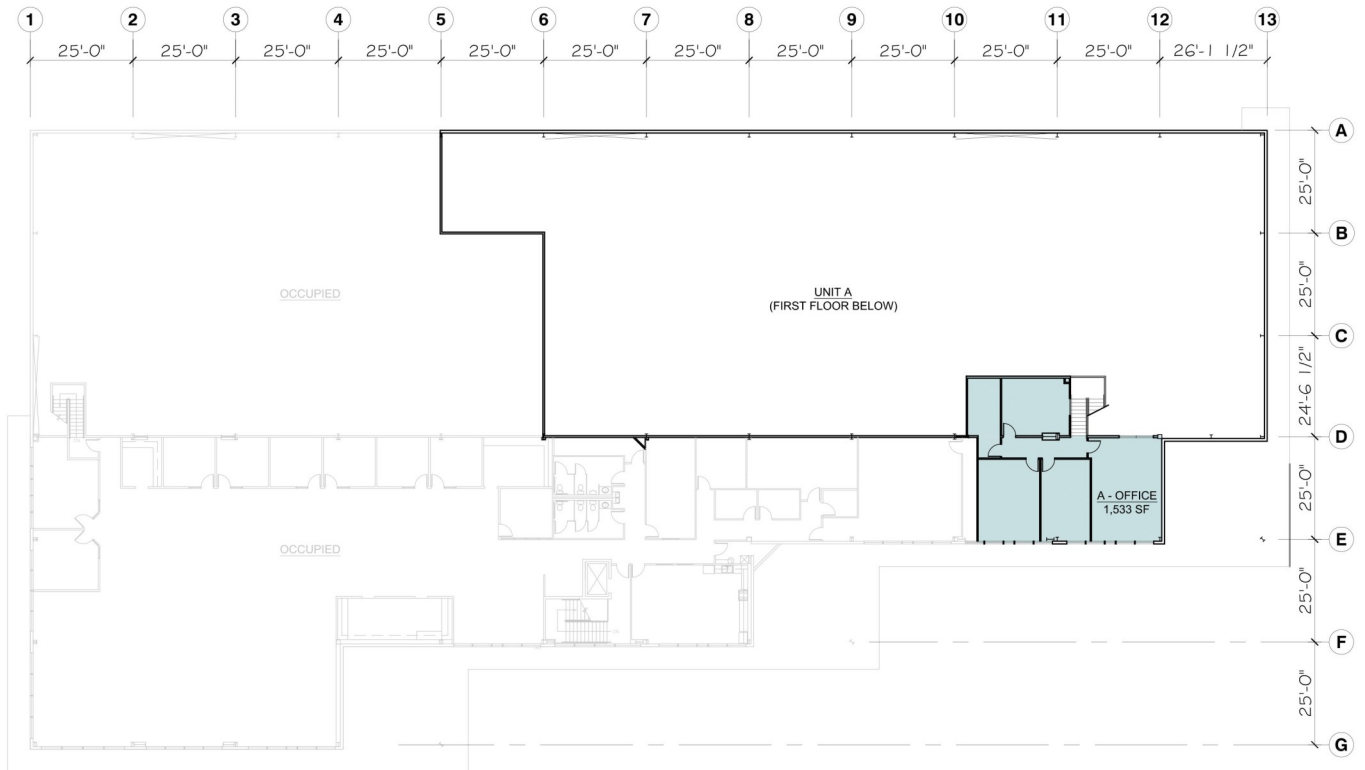
**FIRST FLOOR PLAN**  
SCALE: 1"=30'-0"



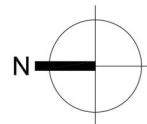
**FOR ADDITIONAL INFORMATION PLEASE CONTACT:**  
 The Property Management Team: [propertymanagement@kaufmancd.com](mailto:propertymanagement@kaufmancd.com)  
 Phone: (360) 491-5230  
 7711 Martin Way E, Olympia WA 98516

[www.kaufmancd.com](http://www.kaufmancd.com)

# 818 - 79th AVENUE, SUITE A SECOND FLOOR PLAN



**SECOND FLOOR PLAN**  
SCALE: 1"=30'-0"



**FOR ADDITIONAL INFORMATION PLEASE CONTACT:**  
 The Property Management Team: [propertymanagement@kaufmancd.com](mailto:propertymanagement@kaufmancd.com)  
 Phone: (360) 491-5230  
 7711 Martin Way E, Olympia WA 98516

**[www.kaufmancd.com](http://www.kaufmancd.com)**