

# FOR LEASE

2734 SW 93rd Avenue  
Tumwater, WA 98512

## I-5 COMMERCE - Pad Ready Lots



BUILD TO SUIT LEASE OPPORTUNITIES AVAILABLE AT RARE LOCATION ADJACENT TO I-5

- Lots ranging from 1.03 to 3.74 acres w/ multiple contiguous lots.
- Flat, developable land perfect for commercial or industrial use to include: Trucking—Retail—Restaurants
- Easy access to I-5 with prime freeway frontage
- Zoning: LI (Light Industrial)
- Pocket Gopher mitigated
- Available utilities: Water, sewer, power, Comcast, and Century Link

**Contact us for availability and pricing!**

FOR ADDITIONAL INFORMATION PLEASE CONTACT

[propertymanagement@kaufmancd.com](mailto:propertymanagement@kaufmancd.com)

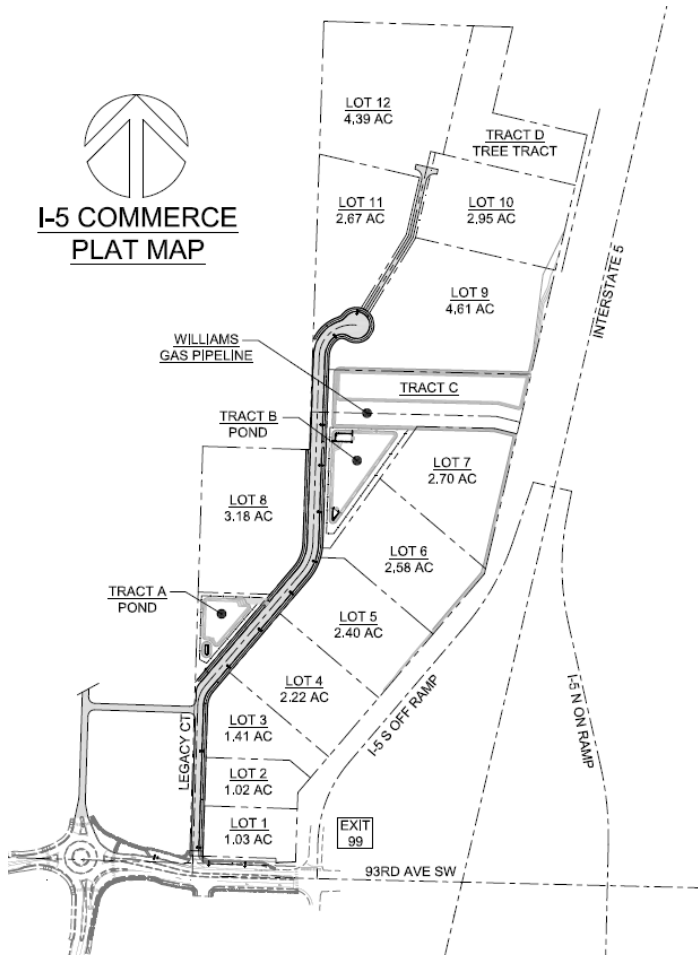
Phone: (360) 491-5230

7908 Sweet Iron Court SE, Tumwater, WA 98501



# 2734 SW 93rd Avenue

Tumwater, WA 98512



Lot #	Acres	SF
1	1.03	44,841
2	1.02	44,271
3	1.41	31,347
4	2.22	96,577
5	2.40	104,355
6	2.58	112,420
7	2.70	117,626
8	3.18	138,540
9	4.61	200,895
10	2.95	128,559
11	2.67	116,237
12	4.39	191,156

## DIRECTIONS:

From I-5 take Exit 99 for WA-121 S/93rd Ave SW

Turn onto 93rd Ave SW

Turn Right

FOR ADDITIONAL INFORMATION PLEASE CONTACT:

propertymanagement@kaufmancd.com

Phone: (360) 491-5230

7908 Sweet Iron Court SE, Tumwater, WA 98501

